

SN19

Rotorcraft Spinning News

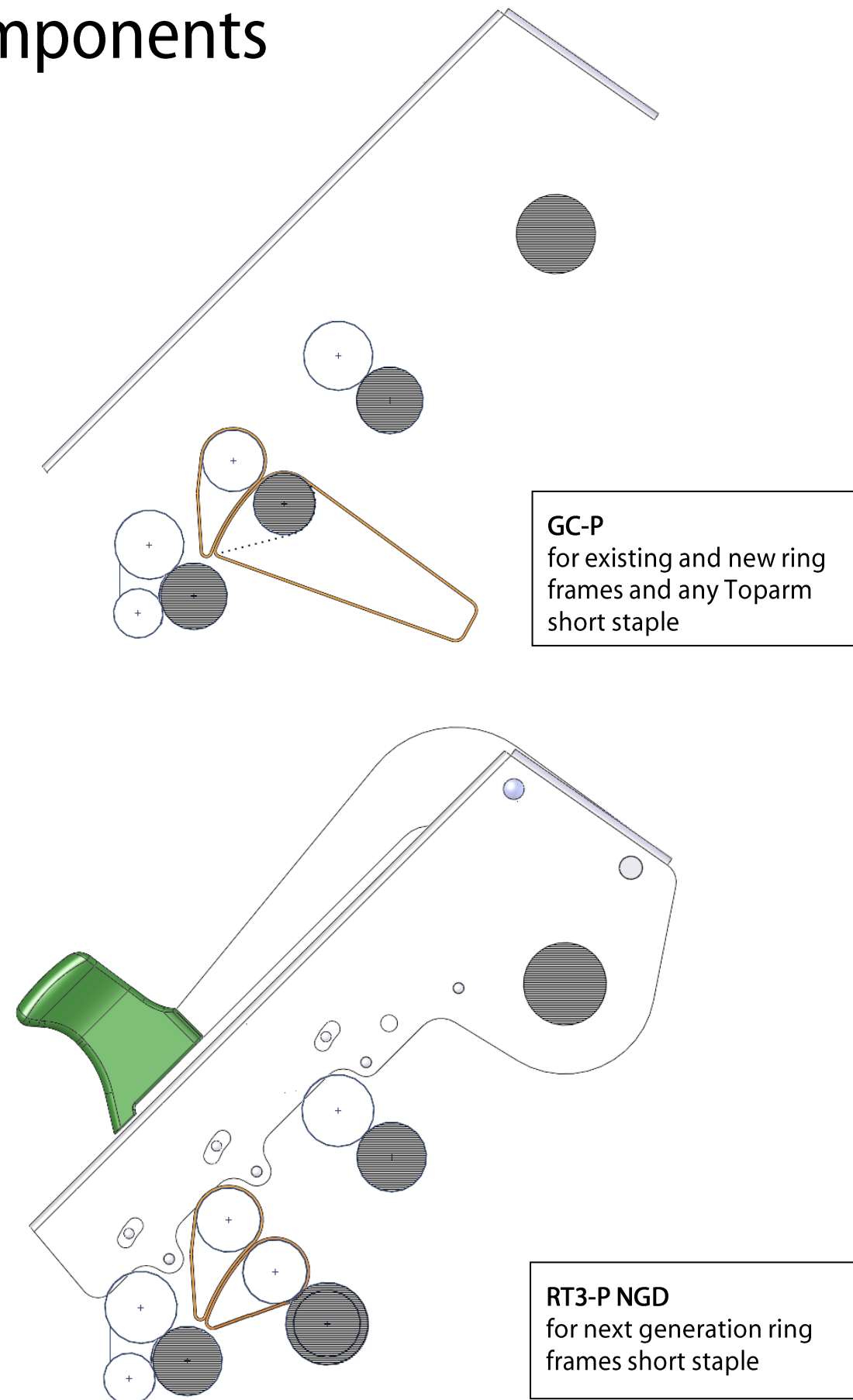
No. 19-06
GC-P and RT3-P NGD
Compact Drafting

Issue
June 2017

GC-P and RT3-P NGD

Compact Drafting Short Staple

Components



The issue mills face

Common top arms require substantial efforts for the settings to be adjusted. This problem is intensified by the lack of sufficiently qualified staff. Therefore, it is impossible to

achieve a situation in the mill where all top arms are set correctly. The consequences for production are obvious: Spindle-to-spindle variations and higher cob rejection rate.

The solution

The RT3 Drafting System is represented by our top arm RT3 and its components in combination with Green Compact, which do not have a single set screw.

Instead, exchangeable components in different colors guarantee the perfect drafting of natural and synthetic fibers up to Ne 60 mm.

Different colors also allow any operator to

easily discover and correct, if the setting is not appropriate on a particular top arm.

Thereby, RT3 eliminates human error as the source of spinning inconsistency.

The results are obvious:

Consistent yarn quality spindle-to-spindle on one hand, but less effort for maintenance and supervision on the other hand.

GC-P Compact Drafting for existing and new ring frames

- + Compacting without extra power consumption
- + Perfect fiber guidance ensured by extended cradles and optimized spinning table position
- + Available for short- and long bottom aprons

RT3-P NGD Compact Drafting for next generation ring frames

In addition to all GC-P features:

- + Bottom aprons can be replaced individually while the frame is running
- + No extra drive to support the apron-bottom-roller at half length of the frame
- + Color labeled fix parts to identify and check settings